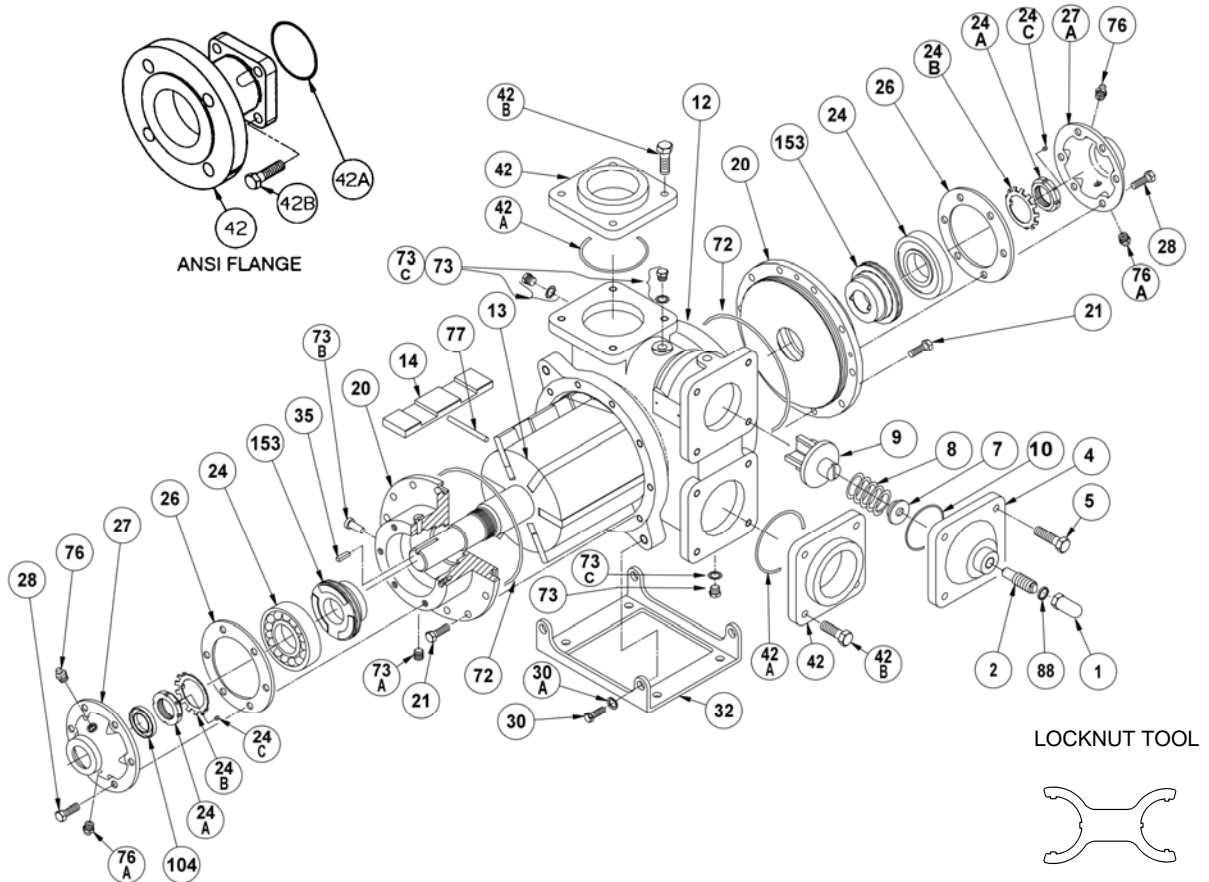


BLACKMER PARTS LIST

MODEL: SX3A

Keep with Instructions 104-B00 for Installation, Operation and Maintenance

Section 104
Effective Dec 2013
Replaces Sept 2007



REF. NO.	DESCRIPTION	PARTS PER PUMP	PART NO.	REF. NO.	DESCRIPTION	PARTS PER PUMP	PART NO.
1	Cap – Relief Valve (R/V)	1	413151	28	Capscrew – Bearing Cover	12	924031
2	Adjusting Screw – R/V	1	433101	30	Capscrew – Foot Bracket	4	924071
4	Cover – R/V	1	415301	30A	Lockwasher – Bracket (12 mm STS)	4	909586
5	Capscrew – R/V Cover	4	924036	32	Mounting Bracket	1	832225
7	Spring Guide – R/V	1	423101	35	Key – Shaft (10mm Metric)	1	909146
8	Spring – R/V (51- 75 psi)	1	471632	42	Key – Shaft (5/16" Domestic)	2	909206
	Spring – R/V (76 –110 psi)		471632		Flange – 3" Weld		652201
	Spring – R/V (111-125 psi)		471615		Flange – 3" ANSI (150 RF)		654500
9	Valve – R/V	1	455301	42A	O-Ring – Flange	2	702101
10	O-Ring – R/V Cover	1	702079	42B	Capscrew – Flange, Weld	8	924071
12	Cylinder	1	022225		Capscrew – Flange, ANSI		924042
13	Rotor & Shaft – Single End	1	262226	72	O-Ring – Head	2	702210
14	Vane – Duravane	6	094500	73	Plug – ¼" BSPP Hex Head	3	908201
20	Head	2	032227	73A	Pipe Plug – ¼" NPT Socket Head	2	908192
21	Capscrew – Head	20	924036	73B	Plug – Weep Hole	4	340000
24	Bearing	2	903172	73C	Gasket	3	533101
24A	Locknut w/setscrew	2	903582	76	Grease Fitting	2	317815
24B	Lockwasher	2	903524	76A	Grease Relief Fitting	2	701992
24C	Setscrew – Locknut	2	924060	77	Push Rod	3	122225
26	Gasket – Bearing Cover	2	381817	88	Seal Ring – R/V Cap	1	533101
27	Bearing Cover - Inboard	1	042225	104	Oil Seal	1	331908
27A	Bearing Cover - Outboard	1	042227	153	Mechanical Seal	2	332260
					Tool – Locknut		903091

MECHANICAL SEAL

REF. NO.	DESCRIPTION	PARTS PER PUMP	PART NO.
153	Mechanical Seal Complete – Silicon Carbide Stationary Seat, PTFE O-Ring, Custom Carbon Rotating Seal Face with PTFE Seal Ring (LACT)	2	332260
153D	O-Ring – Stationary (PTFE)	2	702080
153L	Seal Ring – PTFE	2	**

** 153L PTFE Seal Ring is not available as a separate part.

